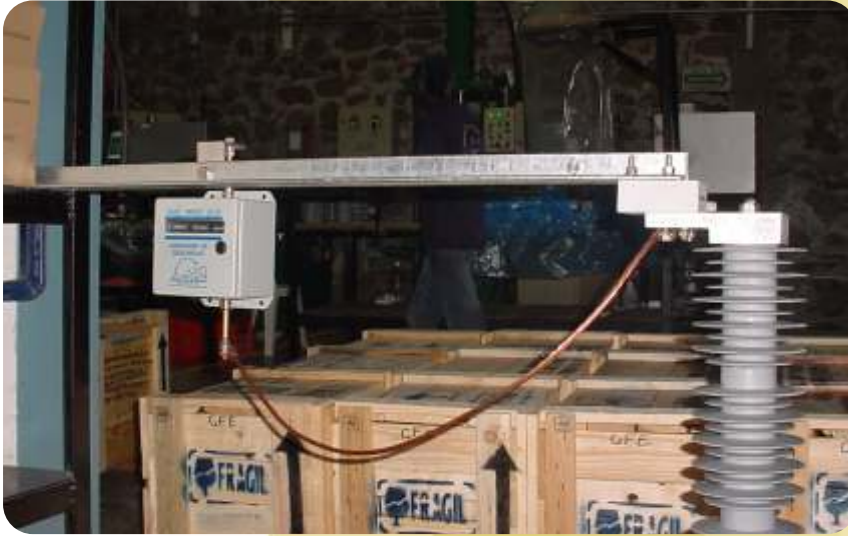




The discharge counter is conform by 3 counters, open core magnetic circuit and an energy amplifier (battery use). With this design the equipment record three current level and let define the current level of the lightning discharge in the area where have been installed.

LIGHTNING DISCHARGE COUNTER



MAPPEC have been developed this lightning discharge counter that let calibrate three current levels, from 400 A to 100 kA; recording each counter a defined current-range, ensuring with it the reliability of the records and avoiding the probability of core saturation.

CHARACTERISTICS

NEMA 4 Enclosure	---
Operation Current (kA)	0.4 100
Source voltage*	Battery 9 V, type D
Counters (display)	3 of 6 digits
Dimensions (mm)	160 x 153 x 119
Weight (Kg)	2.8

* Estimated battery life (1 year).

** Include hardware for being fastened.



MAPPEC S.A. DE C.V.
Av. Edo. De Puebla N° 6-Bis
Col. Lázaro Cárdenas
Cuernavaca Mor.
Tel. (777) 318 29 46
Fax (777) 314 11 22
e-mail: mappec@avantel.net