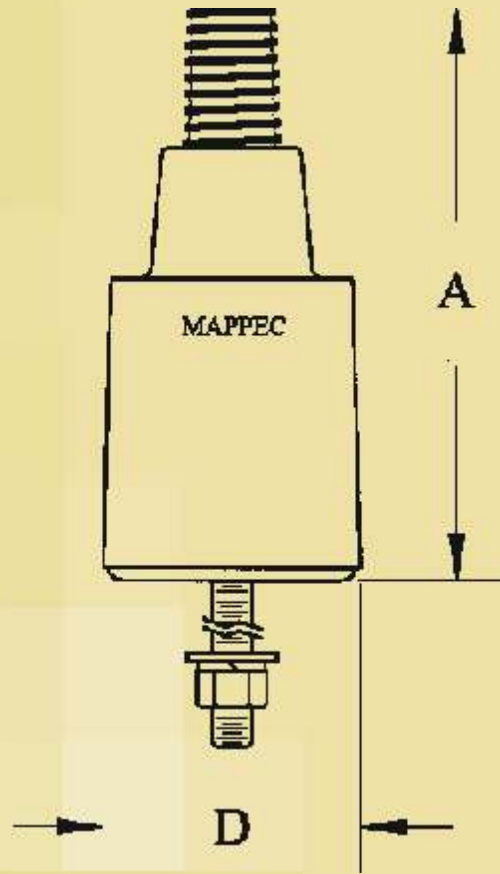


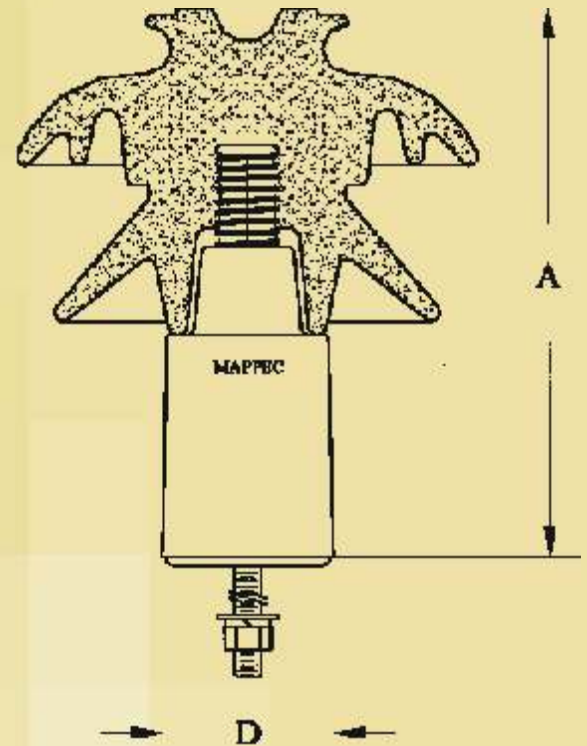
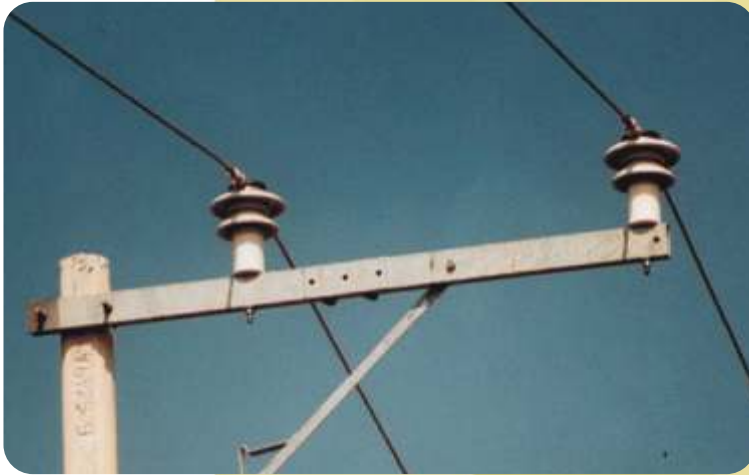
# ISOLATED PIN OF POLYMERIC CONCRETE (AA33)



## ISOLATED PIN OF POLYMERIC CONCRETE (AA33)

DESCRIPTION	
NOMINAL HEIGHT (MM)	210
MAXIMUM DIAMETER (MM)	100
LEAKAGE DISTANCE (MM)	105
ARC DISTANCE (MM)	140
CFO (+) (KV)	115
DIELECTRIC STRENGTH (2 TIMES THE CFO) WITH FRONT WAVE OF 2000 KV/ $\mu$ S	230
MECHANICAL RESISTANCE (KN)	3.92

# ISOLATED PIN OF POLYMERIC CONCRETE (AA 33) AND PIN INSULATOR OF PORCELAIN ANSI 56-3



**SET**

## ISOLATED PIN OF POLYMERIC CONCRETE (AA 33) AND PIN INSULATOR OF PORCELAIN ANSI 56-3

DESCRIPTION	
NOMINAL HEIGHT (MM)	292
MAXIMUM DIAMETER (MM)	267
LEAKAGE DISTANCE (MM)	612
ARC DISTANCE (MM)	323
RATED VOLTAGE (kV)	34
CFO (+) (kV)	200
DRY FLASHOVER VOLTAGE 60 HZ- (kV)	125
WET FLASHOVER VOLTAGE 60 HZ (kV)	80
MECHANICAL RESISTANCE (kN)	3.92

