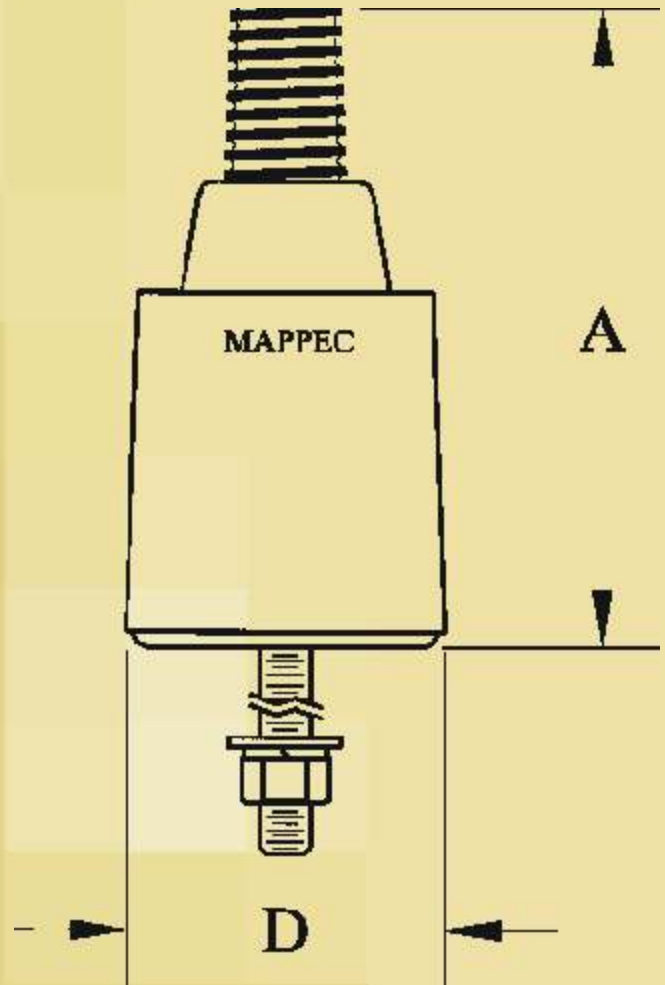


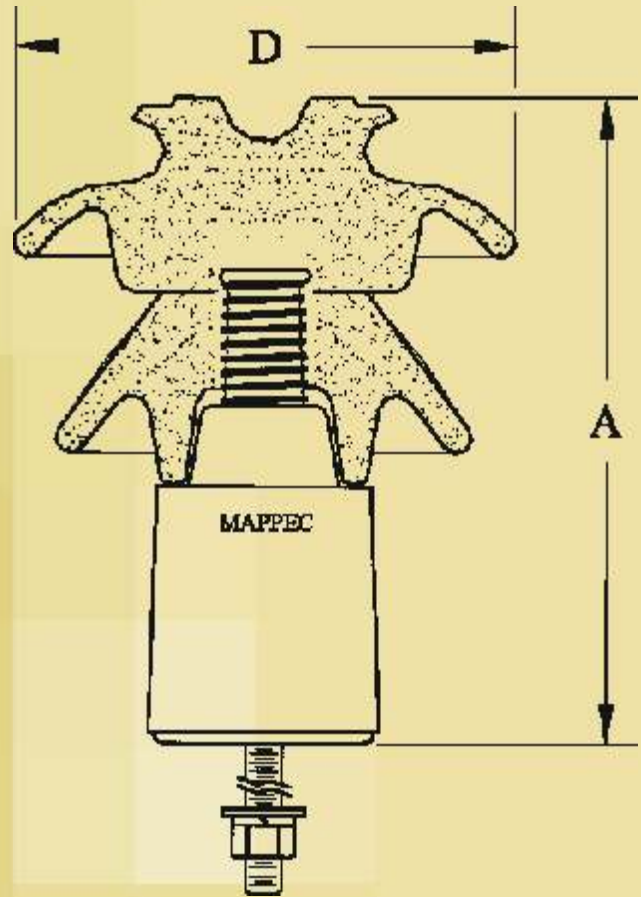
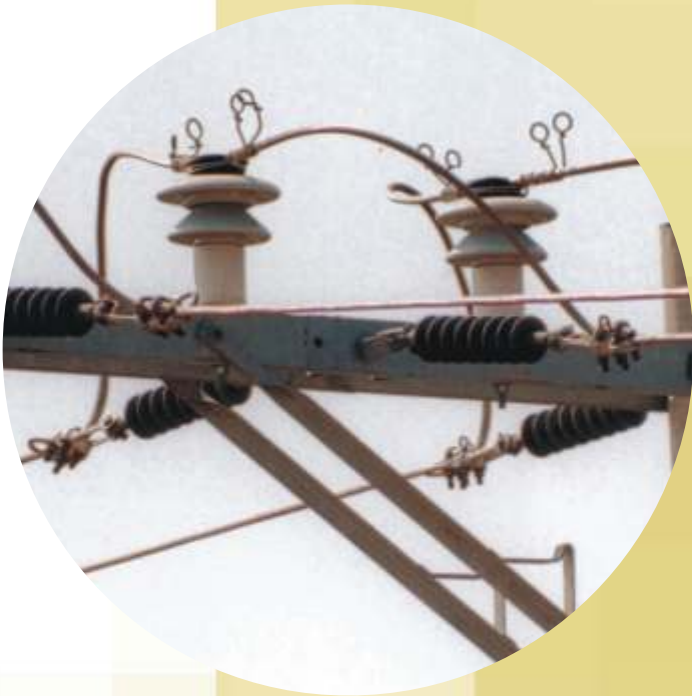
ISOLATED PIN OF POLYMERIC CONCRETE(AA 22A1)



ISOLATED PIN OF POLYMERIC CONCRETE (AA 22A1)

DESCRIPTION	
	AA 22A
NOMINAL HEIGHT (MM)	200
MAXIMUN DIAMETER (MM)	100
LEAKAGE DISTANCE (MM)	125
ARC DISTANCE (MM)	150
CFO (+) (KV)	135
DIELECTRIC STRENGHT (2 TIMES THE CFO) WITH FRONT WAVE OF 2000 KV/ μ S	270
MECHANICAL RESISTANCE (KV)	3.92

**SURGE ARRESTER WITH POLYMERIC CONCRETE HOUSING (ADOM 22A)
AND PIN INSULATOR OF PORCELAIN ANSI 56-1, 56-2**



SET

**SURGE ARRESTER WITH POLYMERIC CONCRETE HOUSING
(ADOM 22A) AND PIN INSULATOR OF PORCELAIN ANSI 56-1, 56-2**

DESCRIPTON	
NOMINAL HEIGHT (MM)	235
MAXIMUN DIAMETER (MM)	100
ARC DISTANCE (MM)	45
CFO (+) (KV)	115
DIELECTRIC RESISTANCE 5.0 KVCD (Ω M)	1000
NOMINAL CURRENT (KA)	5
MECHANICAL RESISTANCE (KN)	3,924
PARTIAL DISCHARGE (PC)	< 3

